

Standard ID

16S rRNA service report

Order Number : HC00000001
Sample name : Test_Sample

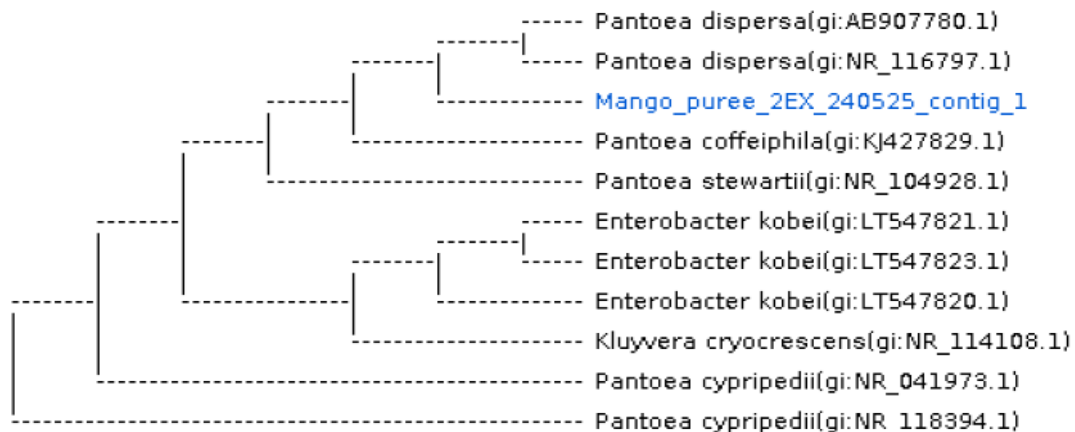
Information

Primer Information

Sequencing Primer Name	Primer Sequences	PCR Primer Name	Primer Sequences
785F	5' (GGA TTA GAT ACC CTG GTA) 3'	27F	5' (AGA GTT TGA TCM TGG CTC AG) 3
907R	5' (CCG TCA ATT CMT TTR AGT TT) 3'	1492R	5' (TAC GGY TAC CTT GTT ACG ACT T) 3'

Subject						Score		Identities	
Accession	Description	Length	Start	End	Coverage	Bit	E-Value	Match/Total	Pct.(%)
AB907780.1	Pantoea dispersa	1492	1	1474	98	2702	0.0	1470/1474	99.72

Kingdom	Family	Genus	Species
Bacteria	Erwiniaceae	Pantoea	Pantoea dispersa



Characterization

Pantoea is a genus of Gram-negative bacteria of the family Enterobacteriaceae, recently separated from the Enterobacter genus. This genus includes at least 20 species.

Under investigation